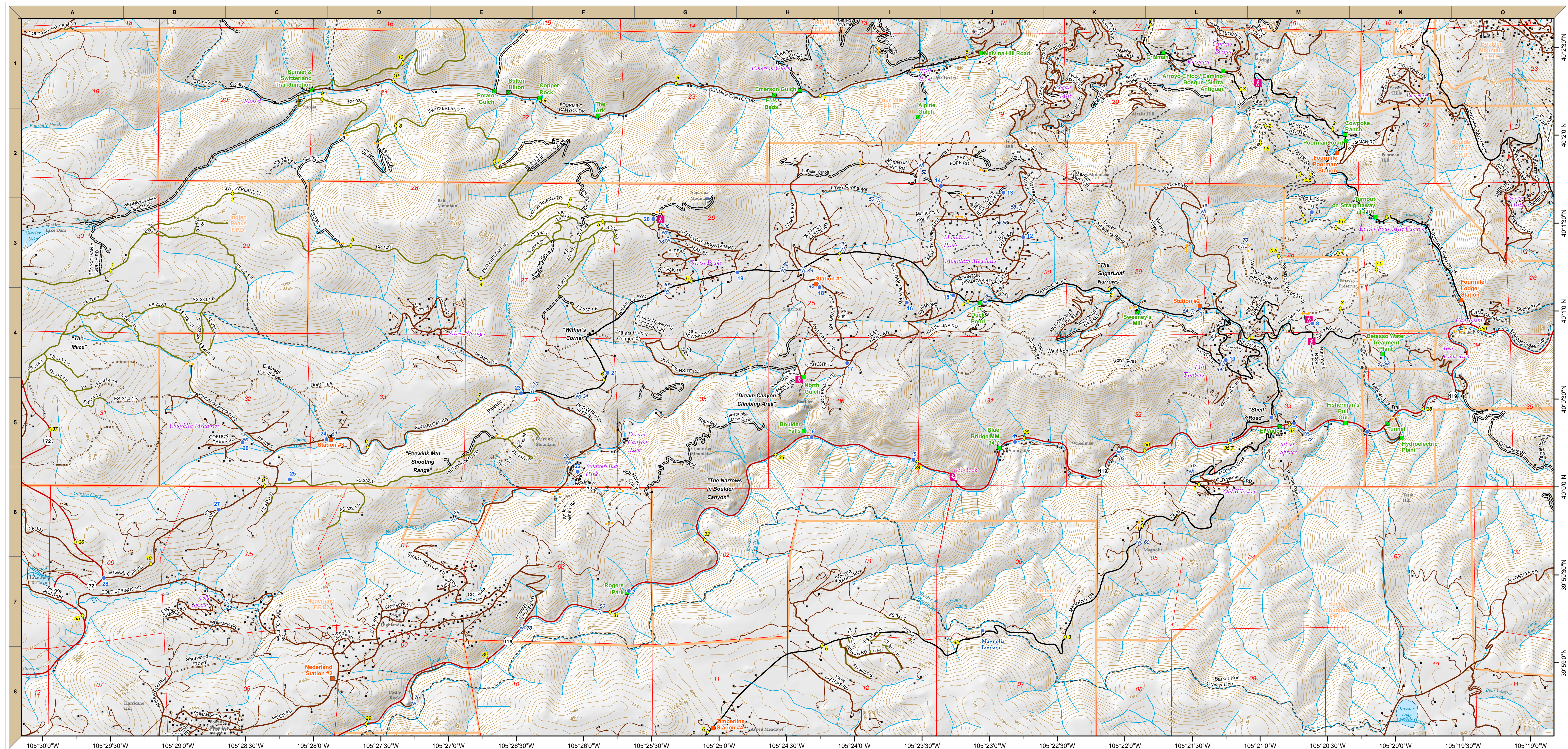


# Sugar Loaf Fire Protection District



R 72 W R 71 W



LANDING ZONES					
ID#	Name	Elev (ft)	LAT	LONG	GRID
1	HWY 119 - Fisherman's Parking Area	5,920	N40° 00' 18.6"	W105° 20' 13.0"	N-5
2	HWY 119 & Magnolia Rd Parking Area	6,020	N40° 00' 21.4"	W105° 20' 45.3"	M-5
3	HWY 119 & Sugarloaf Rd - MM 36.7	6,077	N40° 00' 15.5"	W105° 21' 13.5"	L-5
4	HWY 119 - Summit Parking Area	6,276	N40° 00' 34.5"	W105° 22' 49.1"	L-5
5	HWY 119 - Cobb Rock Climbing Area	6,710	N40° 00' 08.3"	W105° 23' 34.2"	L-5
6	HWY 119 - Boulder Falls Parking Lot	6,900	N40° 00' 15.9"	W105° 24' 14.7"	H-5
7	HWY 119 - Roger's Park	7,560	N39° 59' 23.2"	W105° 25' 40.3"	F-7
8	Betasso Preserve Parking / Trailhead	6,570	N40° 00' 56.8"	W105° 20' 39.0"	M-4
9	Betasso Canyon Loop Trail	6,470	N40° 01' 33.3"	W105° 20' 37.9"	M-3
10	Sandy Dr and Kelly Rd	6,580	N40° 00' 42.5"	W105° 21' 15.8"	L-4
11	Station #1	6,490	N40° 01' 04.5"	W105° 22' 22.1"	L-4
12	Mountain Meadows Rd & Wild Tiger Rd	7,230	N40° 01' 24.5"	W105° 22' 45.9"	J-3
13	Plainsview Rd cul-de-sac	7,470	N40° 01' 39.6"	W105° 22' 54.8"	J-2
14	Nietenbach's driveway (252 Left Fork)	7,570	N40° 01' 41.8"	W105° 23' 22.6"	I-2
15	Sugarloaf Rd & "Lower" Lost Angel Rd	7,240	N40° 01' 04.5"	W105° 23' 16.9"	J-4
16	Boulder View Rd cul-de-sac	7,575	N40° 01' 02.0"	W105° 23' 37.1"	I-4
17	Lost Angel Rd & North Gulch Rd	7,630	N40° 00' 41.3"	W105° 24' 03.9"	I-4
18	Station #2	7,650	N40° 01' 07.5"	W105° 24' 38.3"	H-4
19	Sugarloaf Rd and Sugarloaf Mtn. Rd	8,045	N40° 01' 12.0"	W105° 24' 52.8"	H-3
20	Switzerland Trail Parking / Trailhead	8,440	N40° 01' 30.1"	W105° 25' 30.2"	G-3
21	1 Mile Marker @ Pullout / Top of Primos Hill	7,930	N40° 00' 37.6"	W105° 25' 50.2"	F-4
22	"Switzerland Park Meadow"	7,580	N40° 00' 03.8"	W105° 26' 03.3"	F-6
23	Sugarloaf Rd and Primos Rd	7,685	N40° 00' 30.4"	W105° 26' 28.6"	E-5
24	SFPD Station 3	8,090	N40° 00' 14.5"	W105° 27' 54.8"	C-5
25	Sugarloaf Rd & Peewink Mtn Rd (FS 332.1)	8,280	N40° 00' 01.1"	W105° 28' 11.5"	C-6
26	Coughlin Meadows Rd and Gordon Cr Rd	8,215	N40° 00' 13.3"	W105° 28' 32.0"	C-5
27	Coughlin Meadows Rd and Gordon Cr Rd	8,410	N39° 59' 50.3"	W105° 28' 42.5"	B-6
28	Sugarloaf Rd & Peak to Peak Hwy (HWY72)	8,280	N39° 59' 26.8"	W105° 29' 33.3"	A-7

NOTE: HIGHLIGHTING DESIGNATES LZ THAT IS ALSO A STAGING AREA  
NOTE: HIGHLIGHTING DESIGNATES LZ THAT IS ALSO A FIRE STATION

WATER SOURCES						
ID	Name	Size (gal)	Hydrant Pressure	LAT	LONG	Notes
20	Coughlin Meadows Cistern	10,000	0 - dry hydrant	N40° 00' 14.2"	W105° 28' 31.0"	
22	Cold Springs / Hummer Dry Hydrant	Unlimited	0 - dry hydrant	N39° 59' 18.8"	W105° 28' 38.8"	Fed by North Boulder Creek
24	Station 3 Hydrant	50,000+	5 psi	N40° 00' 14.7"	W105° 27' 51.9"	
26	Silver Springs Dry Hydrant	100,000	0 - dry hydrant	N40° 00' 44.8"	W105° 26' 58.6"	Helicopter Bucket Site. Hydrant can be covered in mud. Backflush b/4 using.
28	Winchester Dry Hydrant	Unlimited	0 - dry hydrant	N39° 59' 47.5"	W105° 26' 58.2"	Fed by North Boulder Creek
30	Primos Hill Hydrant	15,000+	65 psi	N40° 00' 31.5"	W105° 26' 23.5"	Fed from cistern on Primos Hill.
32	Switzerland Park Dry Hydrant	Unlimited	0 - dry hydrant	N40° 00' 6.9"	W105° 26' 07.0"	Fed by North Boulder Creek.
34	Primos Hill Cistern	15,000+	0 - dry hydrant	N40° 00' 29.6"	W105° 26' 3.3"	Cistern fed by Lakewood Pipeline. Cistern feeds Primos Hill Hydrant
36	Swiss Peaks Cistern	10,000	0 - dry hydrant	N40° 01' 25.5"	W105° 25' 25.5"	Road to tank poor. Cistern also feeds hydrant on Swiss Peaks Rd.
38	Swiss Peaks Hydrant	10,000	40 psi	N40° 01' 22.8"	W105° 25' 23.5"	
40	5-mile Cistern	12,000	0 - dry hydrant	N40° 01' 5.6"	W105° 25' 23.9"	
42	Old Townsite Cistern	15,000+	0 psi	N40° 01' 12.8"	W105° 24' 32.6"	
44	Old Townsite Hydrant	15,000+	40 psi	N40° 01' 12.9"	W105° 24' 23.5"	
46	Station 1 Cistern	5,000	0 - dry hydrant	N40° 01' 07.9"	W105° 24' 16.7"	
48	4-mile Marker Cistern	8,000	0 psi	N40° 01' 20.0"	W105° 24' 06.1"	
50	Lasky Pond	50,000+	No hydrant	N40° 01' 36.9"	W105° 23' 50.2"	Helicopter Bucket Site, pond access, must get draft

WATER SOURCES						
ID	Name	Size (gal)	Hydrant Pressure	LAT	LONG	Notes
C-5	52 Rob Wyatt Cistern	10,000	0 - dry hydrant	N40° 01' 48.7"	W105° 23' 31.5"	
C-7	54 Duck Pond Hydrant	30,000+	10 psi	N40° 01' 02.3"	W105° 23' 02.8"	May be limited in drought
D-5	56 Mountain Pines Cistern	8,000	0 - dry hydrant	N40° 01' 29.4"	W105° 22' 57.3"	Currently out of service
E-4	58 Arkansas Mtn Rd Cistern	10,000	0 - dry hydrant	N40° 01' 34.4"	W105° 22' 47.2"	
E-6	60 2307 Magnolia Cistern	10,000	0 - dry hydrant	N39° 59' 40.7"	W105° 21' 53.9"	50 ft in on right side
E-5	62 900 Magnolia Cistern	10,000	0 - dry hydrant	N40° 00' 0.4.7"	W105° 21' 31.1"	Turn into driveway, turn around at cistern
F-5	64 LaHue Cistern	10,000	5 psi	N40° 00' 59.1"	W105° 21' 30.6"	
F-3	66 1188 Weaver Dr Cistern	12,000	0 - dry hydrant	N40° 01' 33.4"	W105° 21' 26.2"	
G-5	68 Sandy Dr Cistern	10,000	0 - dry hydrant	N40° 00' 41.9"	W105° 21' 16.9"	
G-3	70 470 Weaver Dr Cistern	16,000	0 - dry hydrant	N40° 01' 21.7"	W105° 21' 08.6"	
G-4	72 Barnes Pond	100,000	0 - dry hydrant	N40° 00' 18.1"	W105° 20' 39.6"	Fills off Bummer's Creek
H-3	74 Betasso Treated Water Hydrant	Unlimited	100 psi	N40° 00' 41.8"	W105° 20' 04.3"	Have operator turn on pony pump before using
H-3	76 29.3 mm Boulder Creek Fill Site	Unlimited	0 psi	N39° 58' 44.5"	W105° 20' 15.2"	Creek access, must get draft
H-3	78 30.3 mm Boulder Creek Fill Site	Unlimited	0 psi	N39° 59' 10.4"	W105° 20' 27.6"	Creek access, must get draft
I-3	80 31 mm Boulder Creek Fill Site (Parking)	Unlimited	0 psi	N39° 59' 15.9"	W105° 25' 53.3"	Creek access, must get draft
I-3	82 35.7 mm Boulder Creek Fill Site	Unlimited	0 psi	N40° 00' 11.4"	W105° 22' 03.0"	Creek access, must get draft

- Fire Station
- Landing Zone
- Landmark
- 🚰 Climbing Area
- 🚧 Gate
- 🚶 Driveway
- 🛣️ Road - UTV
- 🛣️ Road - Dirt
- 🛣️ Road - Paved
- 🗺️ District Boundary
- 💧 Water Source
- ⬛ Structure
- 🔍 Lookout
- 🚶 Trailhead and Parking Area
- 🚶 Mile Marker
- 🚶 Single Track Trail
- 🛣️ Road - 4WD
- 🛣️ Road - USFS
- 🛣️ Highway

